



60Hz

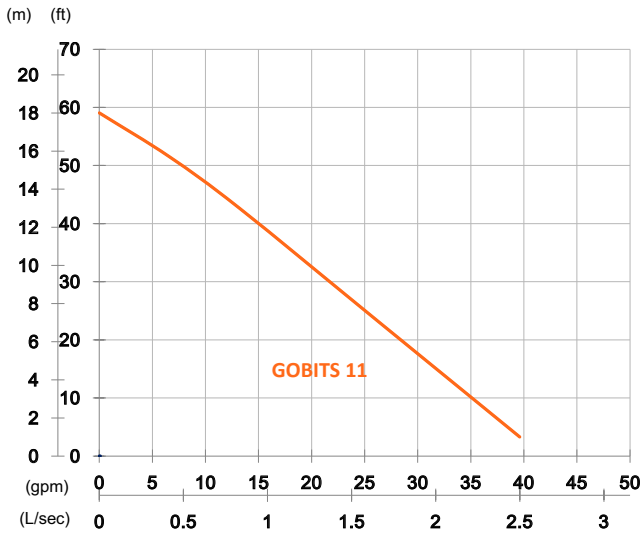
GOBITS Series, these grinder pumps meet the demanding needs of commercial and residential sewage applications. GOBITS series pumps employ a grinding mechanism to effectively grind and transfer solids under high pressure from one place to a higher or a distant place. Ideal for residential and low-pressure sewer applications.

Sewage Pump

# GOBITS 11

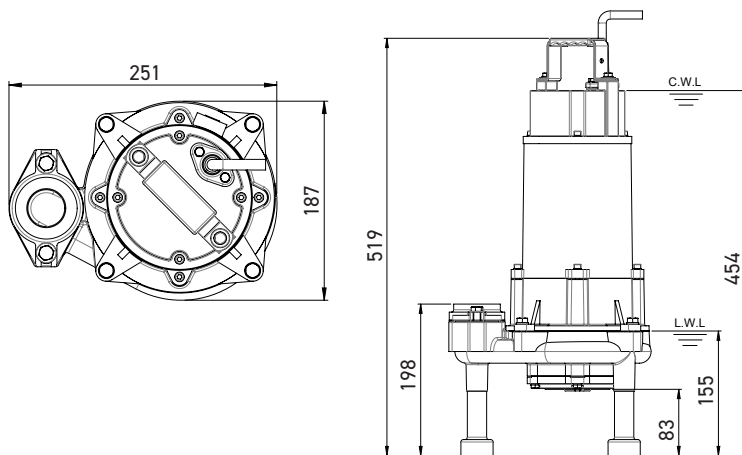
Grinder Pump





**GOBITS 11**

<b>OUTPUT</b>	1.5 HP (1.1 kW)
<b>OUTLET</b>	1.25" (32 mm)
<b>Weight</b>	60 lbs/27 kg
<b>HEAD</b>	Rated: 43 ft, 13 m Max: 59 ft, 18 m
<b>FLOW</b>	Rated: 13 gpm, 0.8 L/s Max: 40 gpm, 2.5 L/s



unit : mm  
C.W.L : Continuous running water level  
L.W.L : Lowest running water level

<b>Pump Type</b>	Electric Submersible Pumps	
<b>Motor</b>	<b>Phase</b>	1-Phase, 3-Phase
	<b>Type</b>	Induction Motor
	<b>Poles</b>	2 Pole (3450 rpm)
	<b>Insulation</b>	Class F
	<b>Protector</b>	Circle Thermal Protector
	<b>Starter</b>	1-Phase · Capacitor-Run, 3-Phase · D.O.L.
<b>Lubricant</b>	Food Grade (ISO VG32)	
<b>Specs.</b>	<b>Impeller Type</b>	Vortex
	<b>Shaft Seal</b>	Double Mechanical Seal Silicon Carbide VS Ceramic/Carbon
	<b>Bearings</b>	C3 Shielded ball bearings
	<b>Cable</b>	CSA-Certified PVC Jacketed Cables 33 ft (10 m) or longer upon request
<b>Materials</b>	<b>Pump Casing</b>	Gray Iron
	<b>Impeller</b>	Gray Iron
	<b>Motor Frame</b>	Gray Iron
	<b>Motor Shaft</b>	Stainless Steel
	<b>Grinder Set</b>	Chromium Iron
<b>Max. Liquid Temperature</b>	40°C (104°F)	
<b>Max. Submersion Depth</b>	20 m (66 ft)	
<b>pH Range</b>	pH 5 - pH 8	
<b>Guide Rail</b>	GRL-02	